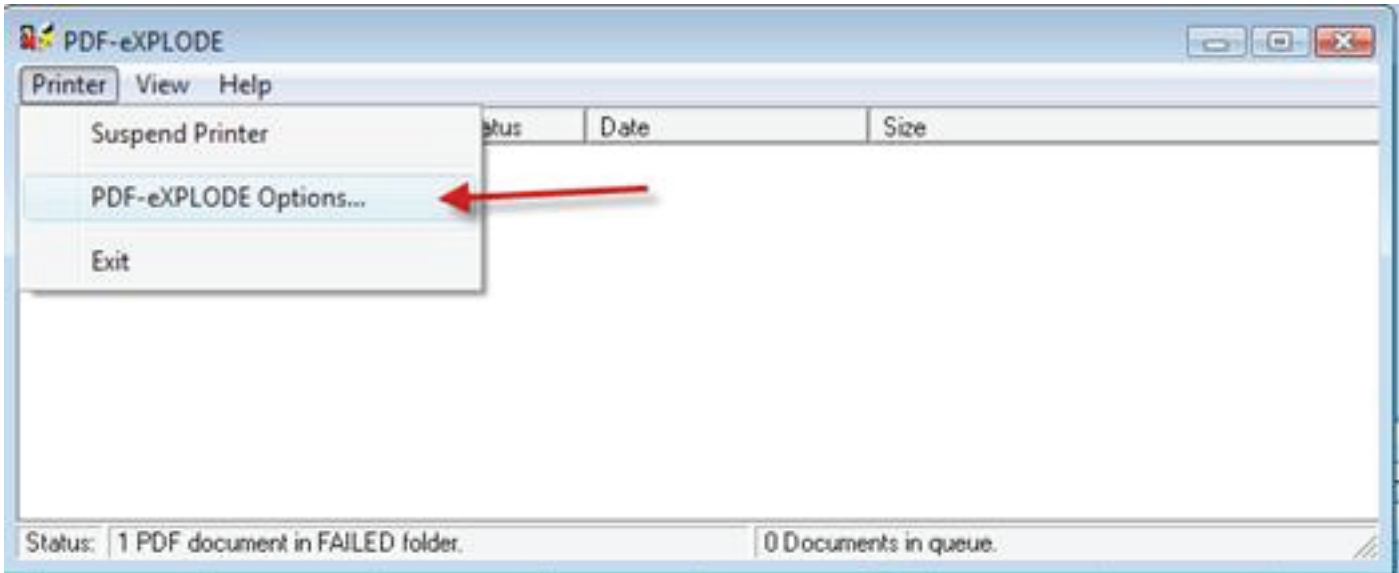
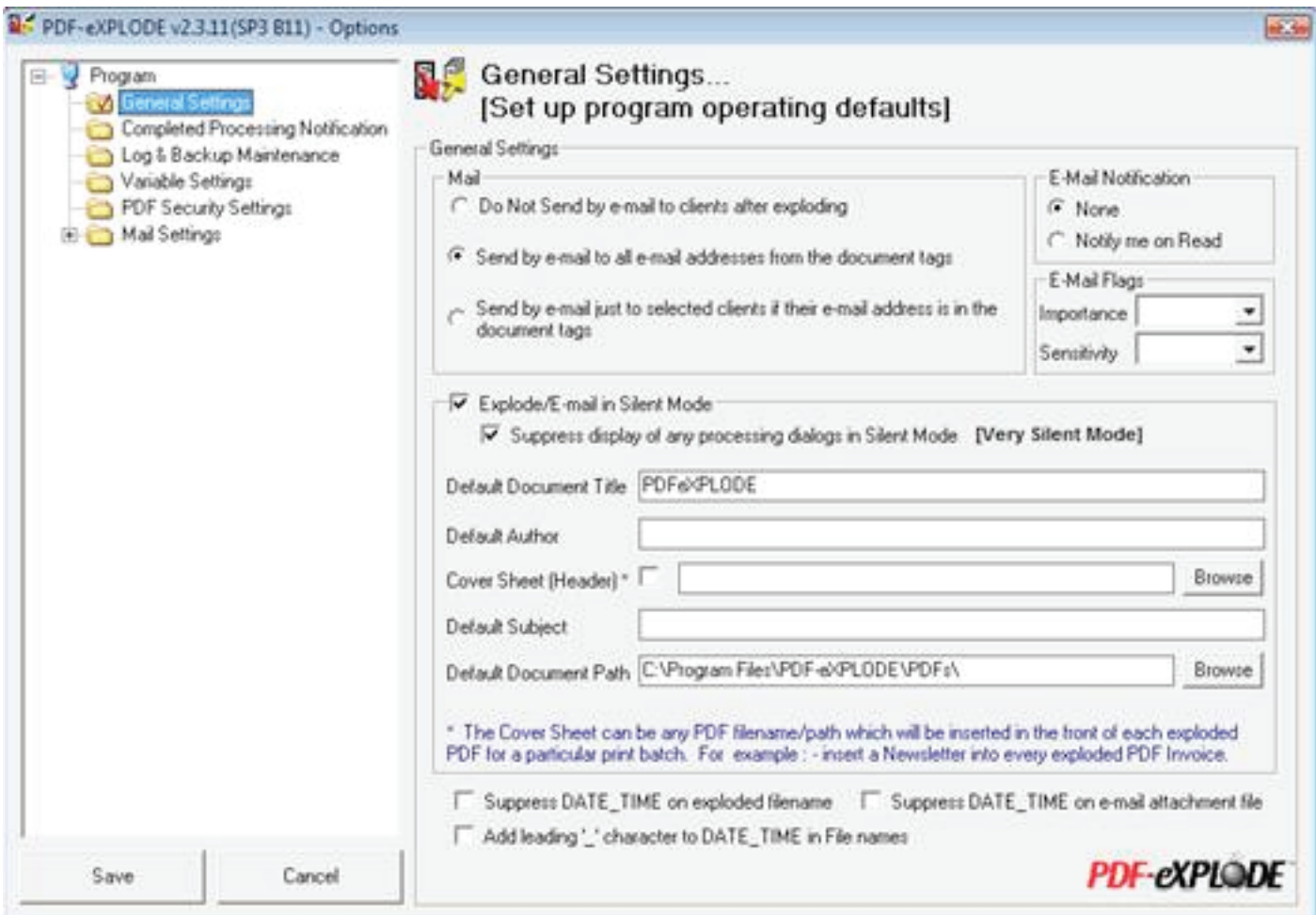


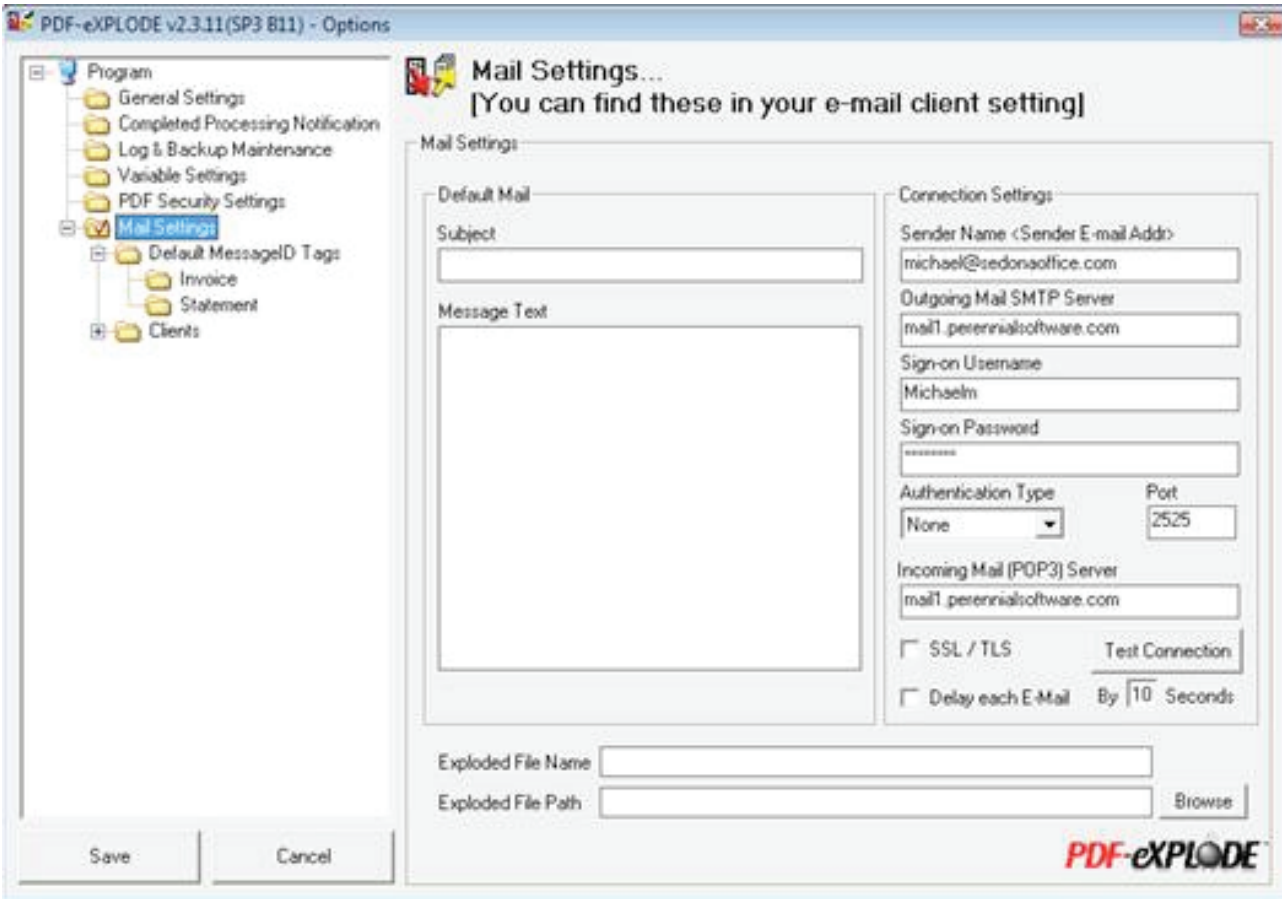
Start PDF-eXPLODE from Start/All Programs, then select Printer, PDF-eXPLODE Options...



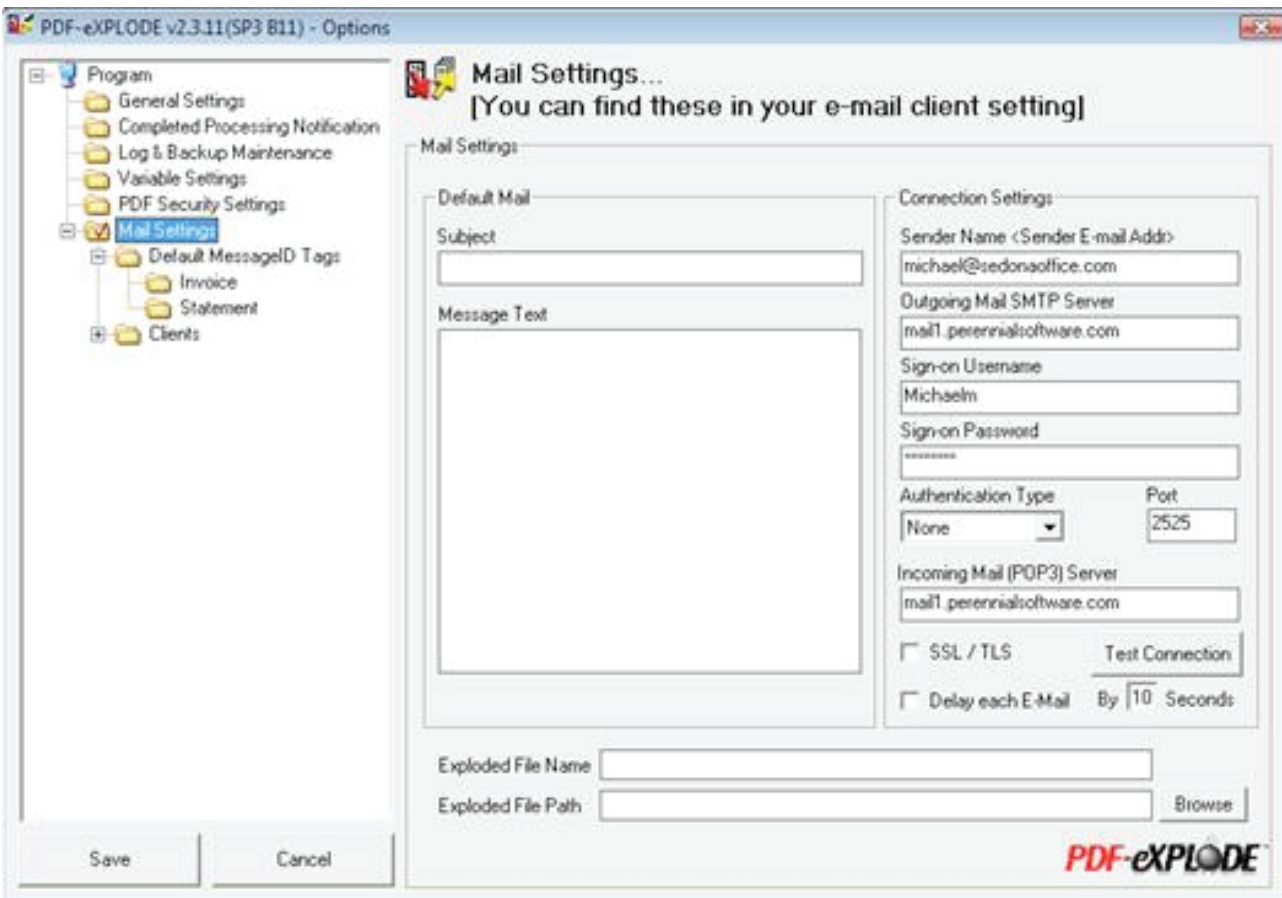
2) Set Explode/E-mail to Silent Mode and Suppress display ... are used to suppress all the messages while it runs... When testing turn these off...



This is the screen to setup the Email Connection



Under MessageID Tags, create folders for both Invoice and Statement.



Under the Invoice and Statement folders setup the email template...

